



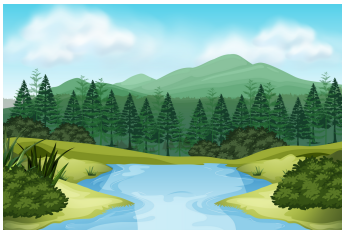
talousmetsä



luonnontilainen
metsä



kansallispuisto



luonnonpuisto



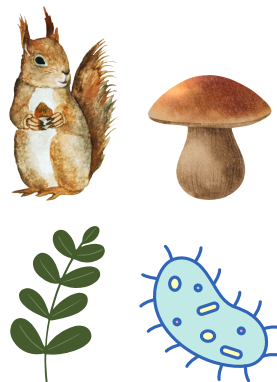
luonnonsuojelu



luonto



eliö



eliökunta



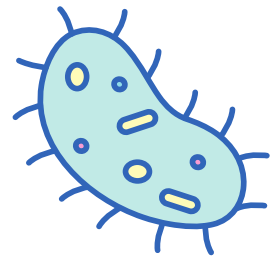
solu



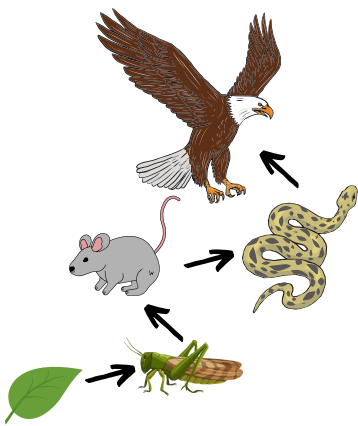
yksisoluinen



monisoluinen



bakteeri



ravintoketju



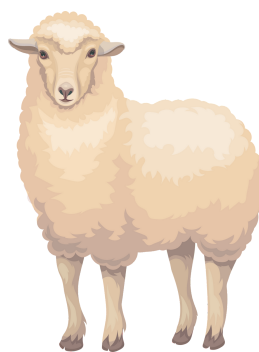
tuottaja



kuluttaja



hajottaja



kasvinsyöjä



peto



luonnon
monimuotoisuus



luontokato



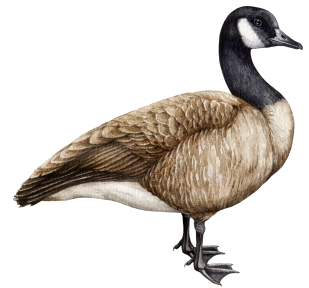
sukupuutto



lehti



tulokaslaji



vieraslaji



metsätyyppi



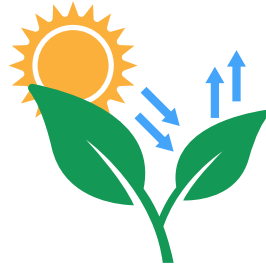
maaperä



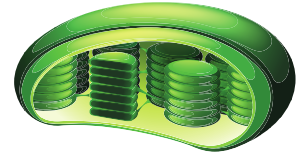
jokaisenoikeudet



metsien monikäyttö



yhteyttäminen



viherhiukkanen



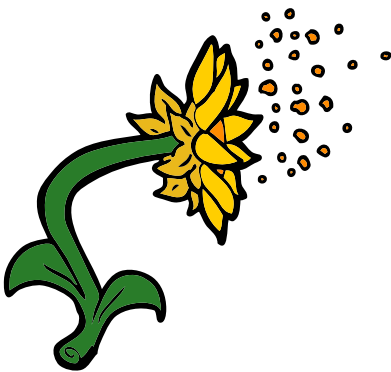
itiökasvi



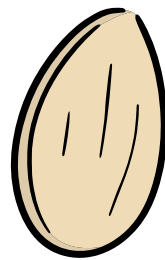
siemenkasvi



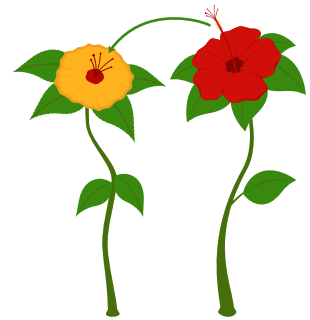
kukka



siitepöly



siemen



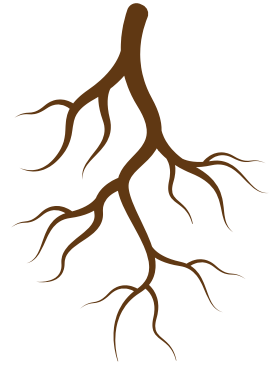
pölytys



hyönteispölytys



kasvukausi



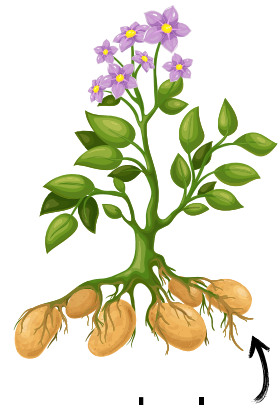
juuret



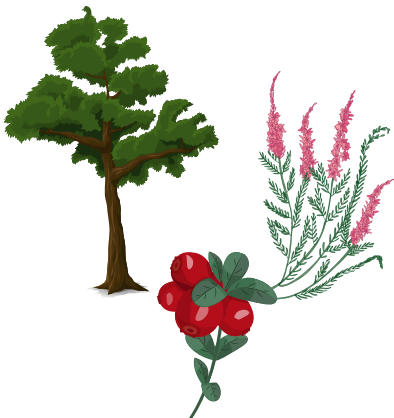
itiö



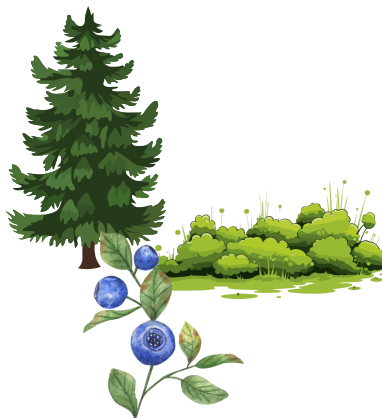
viljelykasvi



mukula



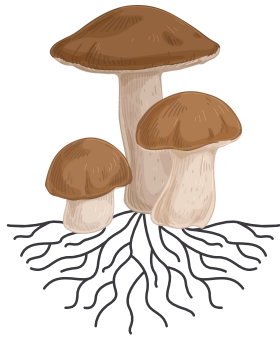
kuiva kangasmetsä



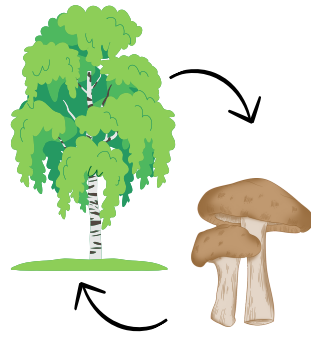
tuore kangasmetsä



lehto



sienirihmasto



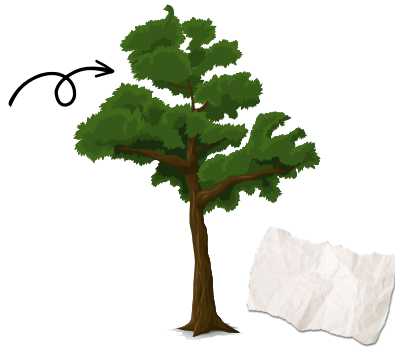
symbioosi



nisäkäs



tukkipuu



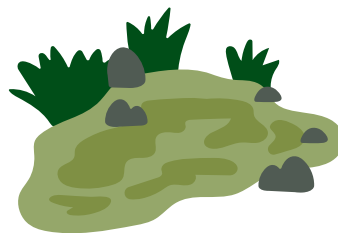
kuitupuu



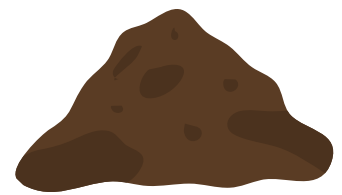
energiapuu



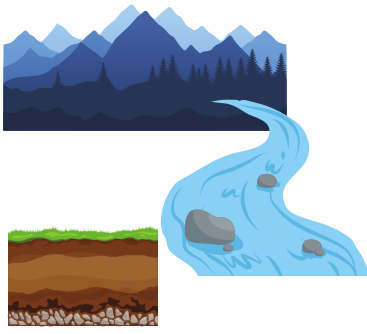
uhanalainen



suo



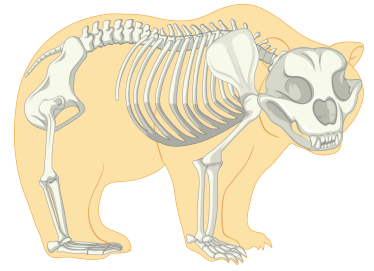
turve



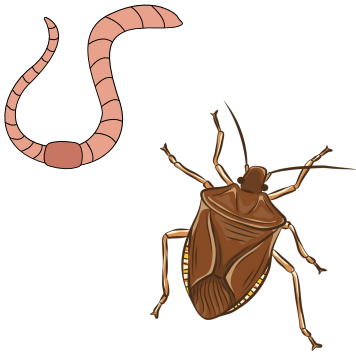
eloton luonto



elollinen luonto



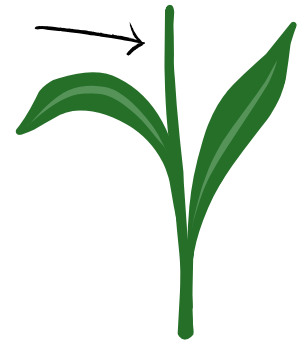
selkärankainen



selkärangaton



taimi



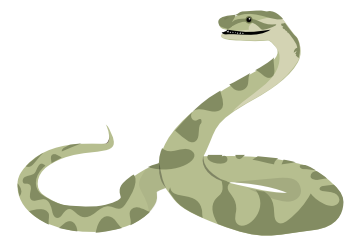
varsi



talvehtiminen



talvihorros



kylmähorros