



talviuni



suojaväri



muuttolintu



ravinto



hyönteinen



pölyttäjä



niitty



mesi



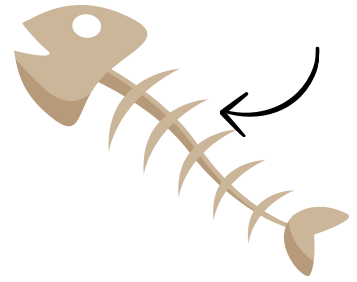
rakennettu  
ympäristö



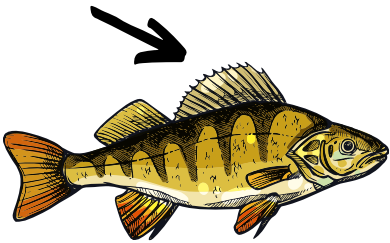
sopeutuminen



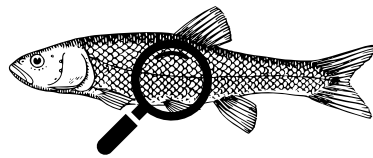
elinympäristö



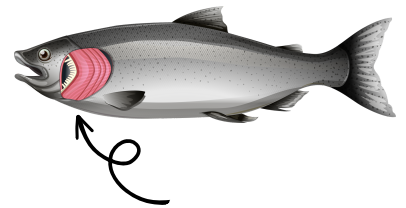
ruoto



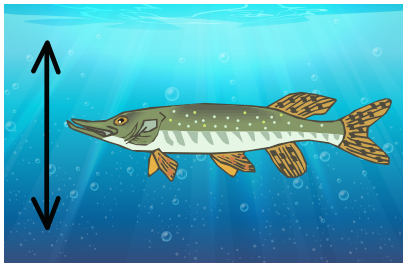
evä



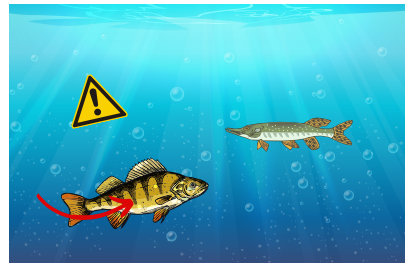
suomu



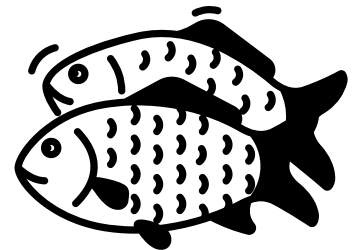
kidukset



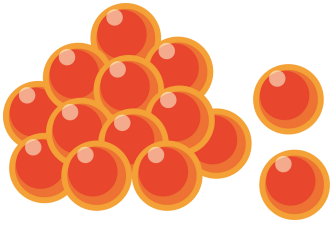
uimarakko



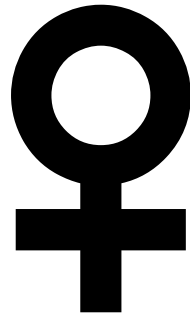
kylkiviiva-aisti



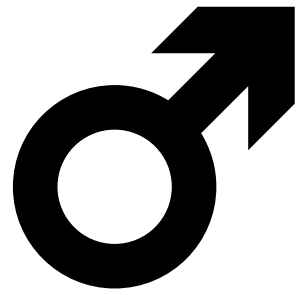
kutu



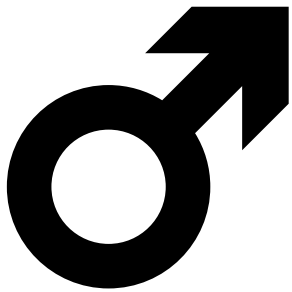
mäti



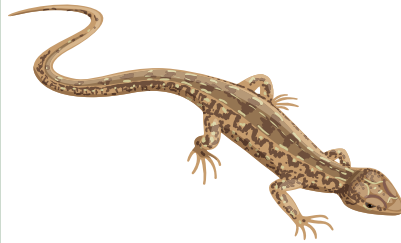
naaras



koiras



uros



vaihtolämpöinen



tasalämpöinen



höyhenpeite



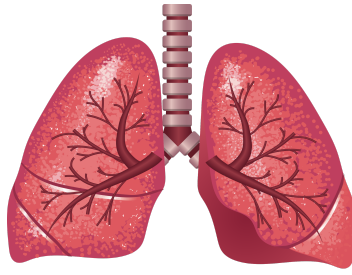
sulka



höyhen



karvapeite



keuhkot



pato



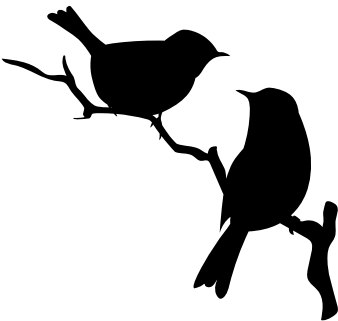
talviturkki



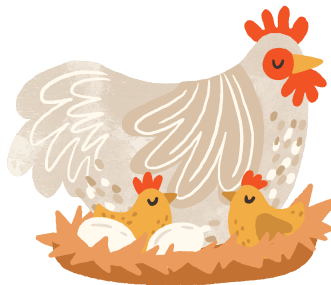
pesä



muna



soidin



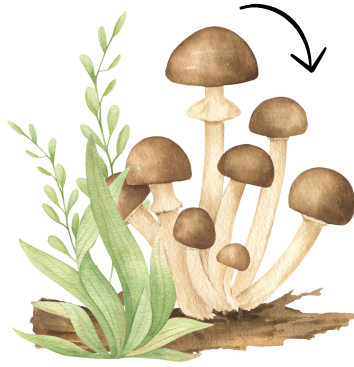
hautominen



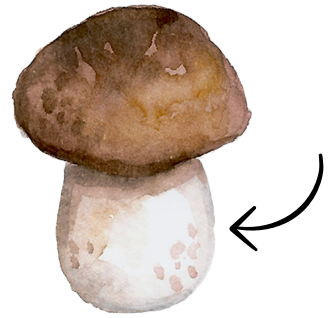
kuoriutuminen



luuppi



itiöemä



jalka



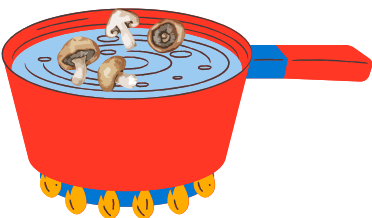
lakki



heltat



pillit



ryöppäminen



pelto



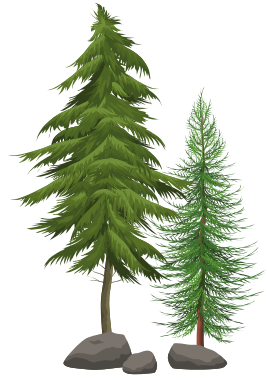
multa



pitkospuut



ruska



havupuu



lehtipuu



oksa



latva



kaarna



tuohi



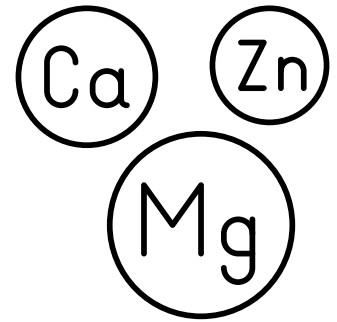
runko



kanto



auringonvalo



ravinteet



neulanen



käpy



mäntymetsä



kuusimetsä



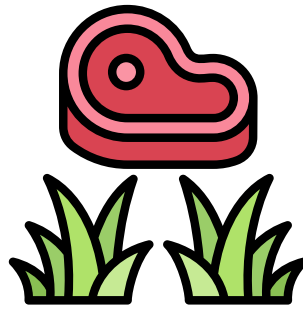
sekametsä



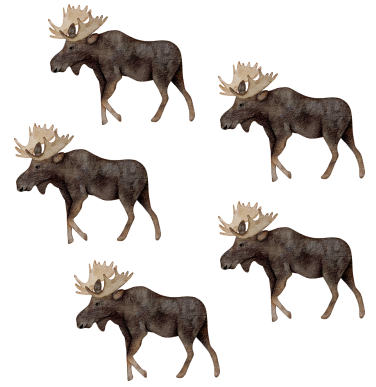
levinneisyys



märehtijä



kaikkiruokainen



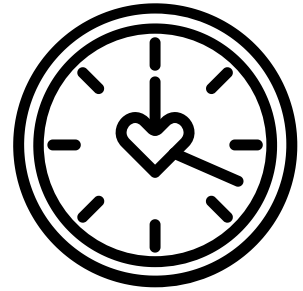
populaatio



emo



poikanen



elinikä



tuntomerkki



jätös

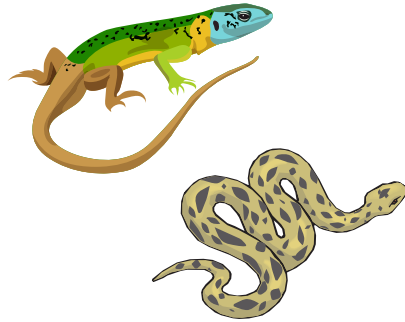


jälki





lintu



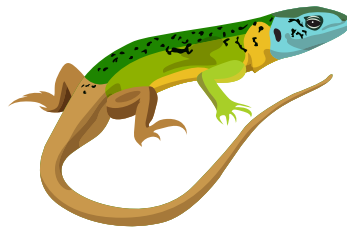
matelija



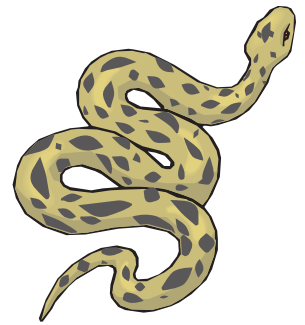
kala



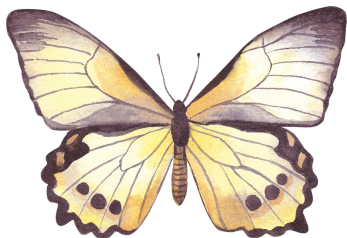
sammakko



lisko



käärme



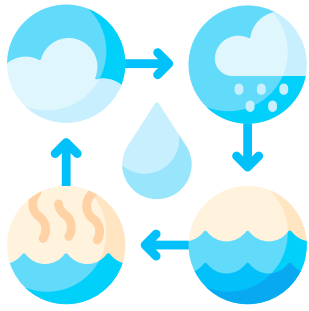
perhonen



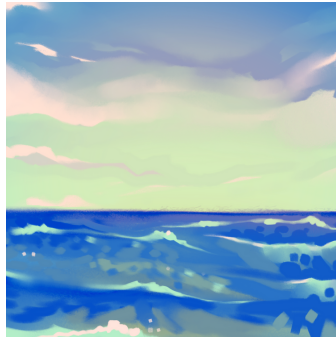
hämähäkki



laji



veden kiertokulku



meri



järvi



joki

